

EX CALL-POINT RELOCATED TO ADJACENT WALL.

EX EQUIPMENT RELOCATED.

NEW FD30 DUAL SWING DOOR.

NEW SOUNDER FOR F.O.H

NEW FIRE EXTINGUISHERS FOR F.O.H

TERRACE AREA 239M2

AREA 30M2

01 PLAN
Scale: 1:100@A3

INTERNAL SEATING
TABLE OF 4 X 2 = 8

TERRACE SEATING
TABLE OF 2 X 5 = 10
TABLE OF 4 X 11 = 44
TOTAL SEATING 62

GENERAL NOTES:

1. ALL DIMENSIONS IN MM. ALL MEASUREMENTS MUST BE CHECKED ON SITE PRIOR TO COMMENCING WORKS AND ANY DISCREPANCIES BROUGHT TO THE ATTENTION OF THE DESIGNER. DO NOT SCALE OFF THE DRAWING.
© COPYRIGHT HETERARCHY LTD T/A FABER DESIGN & ARCHITECTURE

MEANS OF ESCAPE

FIRE DOORS TO BE HALF HOUR FIRE RESISTING, SELF CLOSING AND INDICATED BY SIGNS STATING 'FIRE DOOR KEEP CLOSED'. DOORS TO SATISFY BS476 PART 22: 1987 AND BE FD30/30 STANDARD. DOORS PROTECTING MEANS OF ESCAPE SHOULD BE FITTED WITH INTUMESCENT STRIPS AND COLD SMOKE SEALS.

STRUCTURES IN RED ARE JUDGED TO BE A REASONABLE FIRE RESISTING STANDARD FOR PURPOSES OF MEANS OF ESCAPE OR FIRE COMPARTMENTATION.

INNER WALL SURFACES IN ALL AREAS SHOULD BE CLASS 1 SURFACE SPREAD OF FLAME PROPAGATION BS 476-6,7

FIRE ALARM
BUILDING TO BE FITTED WITH FIRE ALARM SYSTEM CONFORMING TO PART L5 OF BS 5839-1:2002 FIRE DETECTION AND FIRE ALARM SYSTEMS FOR BUILDINGS.

MANUAL CALL POINTS (BREAK GLASS SENSORS) TO BE TESTED BI-WEEKLY.

FIRE FIGHTING EQUIPMENT
ALL FIRE FIGHTING EQUIPMENT TO BE SET SO THAT THE CARRY HANDLES ARE LOCATED 1.5M ABOVE FLOOR LEVEL.

ALL EQUIPMENT TO BE SUBJECT TO ANNUAL TESTING BY A COMPETENT PERSON.

EMERGENCY LIGHTING
PREMISES TO BE COVERED WITH EMERGENCY LIGHTING TO STANDARD SET OUT IN BS 5266: PART 1:2002 THE CODE OF PRACTICE FOR THE EMERGENCY LIGHTING OF PREMISES OTHER THAN CINEMAS.

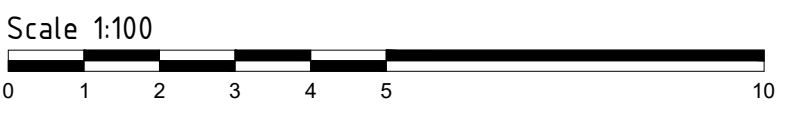
NOTE:
ALL NEW EMERGENCY EQUIPMENT TO BE LINKED TO EXISTING FIRE ALARM SYSTEM, SITE DEPENDENT.

FIRE SAFETY KEY

	AREA TO BE COVERED BY A HEAT DETECTOR
	AREA TO BE COVERED BY SMOKE DETECTOR
	30 MINUTE INTEGRITY/30 MINUTE INSULATION FIRE DOOR WITH SMOKE SEALS AND FITTED WITH A SELF CLOSING DEVICE
	EMERGENCY LIGHTING ILLUMINATED EXIT BOX
	EMERGENCY LIGHTING ILLUMINATED DIRECTIONAL EXIT BOX
	DISABLED REFUGE POINT
	GENERAL EMERGENCY LIGHTING - (TO BE RECESSED LED)
	FIRE NOTICE GENERAL NOTICE
	FIRE NOTICE FIRE EXIT KEEP CLEAR NOTICE
	LICENSED AREAS
	9ltr WATER EXTINGUISHER (CLASS A FIRES)
	FOAM EXTINGUISHER (CLASS A & B FIRES)
	POWDER EXTINGUISHER (CLASS A, B & C FIRES)
	2kg CO2 EXTINGUISHER (CLASS B & ELECTRICAL)
	WET CHEMICAL EXTINGUISHER (CLASS A & F FIRES)
	WATER MIST EXTINGUISHER (CLASS A, B, C, F & ELECTRICAL FIRES)
	FIRE BLANKET
	MANUAL CALL POINT
	FIRE ALARM SOUNDER

FIRE CLASSES

A	FIRES INVOLVING SOLID MATERIALS SUCH AS WOOD, PAPER OR TEXTILES
B	FIRES INVOLVING FLAMMABLE LIQUIDS SUCH AS PETROL, DIESEL OR OILS
C	FIRES INVOLVING GASES
D	FIRES INVOLVING FLAMMABLE METALS
F	FIRES INVOLVING COOKING OILS
	FIRES INVOLVING ELECTRICAL EQUIPMENT



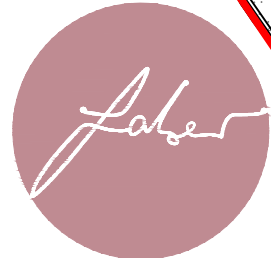
Drawing Status: **FOR APPROVAL**

Client / Project: **THE BISTRO - WAR MEMORIAL PARK COVENTRY**

Title: **PROPOSED LICENSING PLAN**

Rev	Description	Date
A2	KITCHEN ADDED TO DWG.	01.03.22
A1	FOR APPROVAL	03.02.22

MD	-	1:100 @ A3	1395	128	A2
DRAWN	CHECKED	SCALE	PROJECT	DRAWING NUMBER	REV



Faber Design & Architecture
215 Zellig, The Custard Factory
Gibb Street, Birmingham, B9 4AA
Email: info@faber.design
www.faber.design